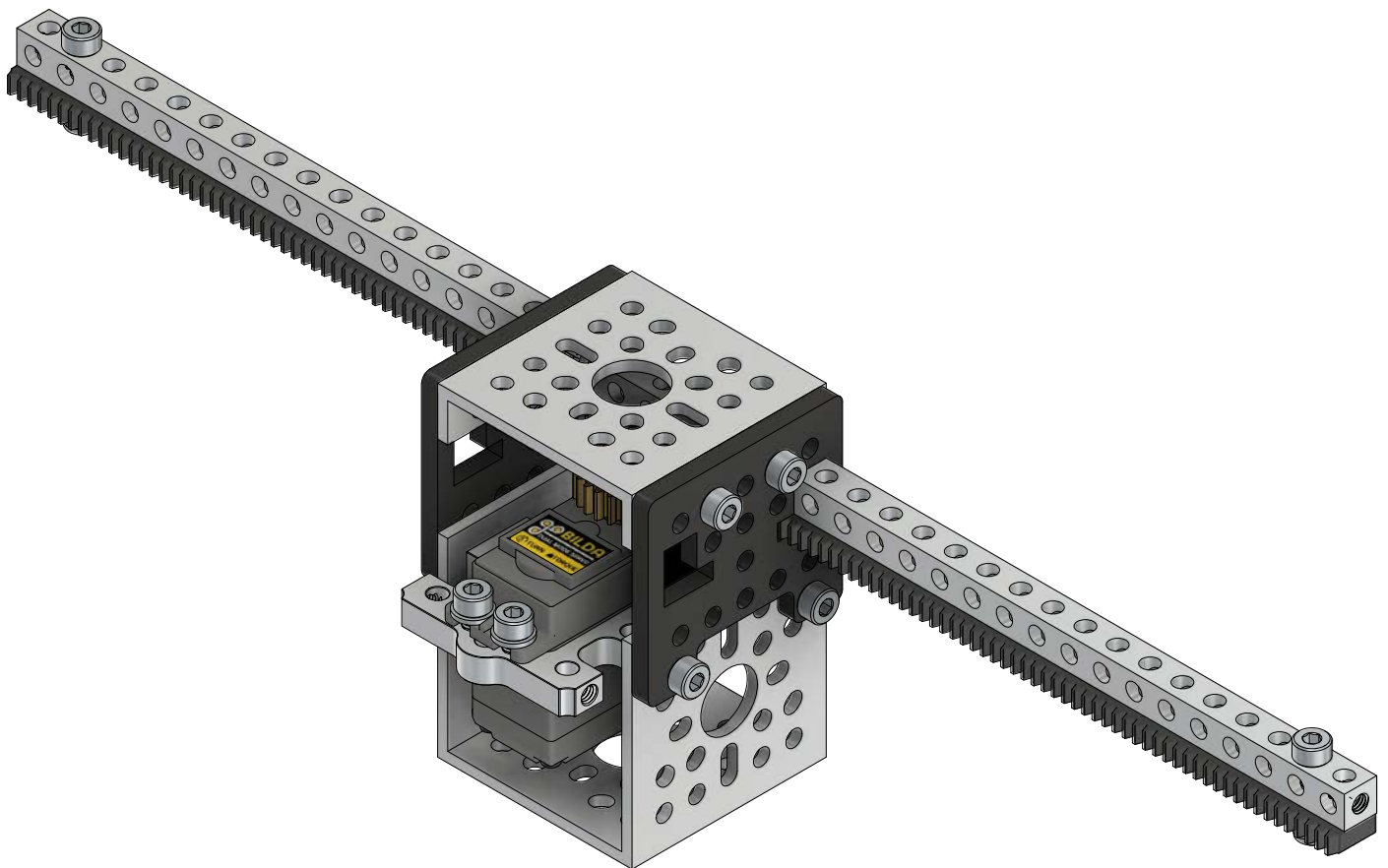




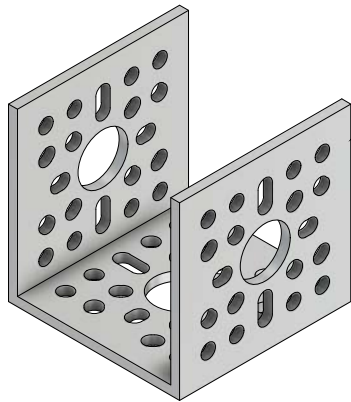
Assembly Instructions for  
**Servo-Driven Gear Rack Kit**  
**(Single Gear Rack)**  
SKU: 3207-0001-0001



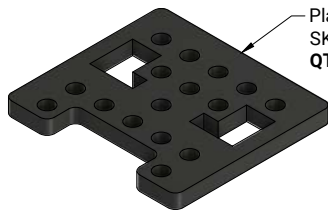
# Kit Contents

## Tools Required

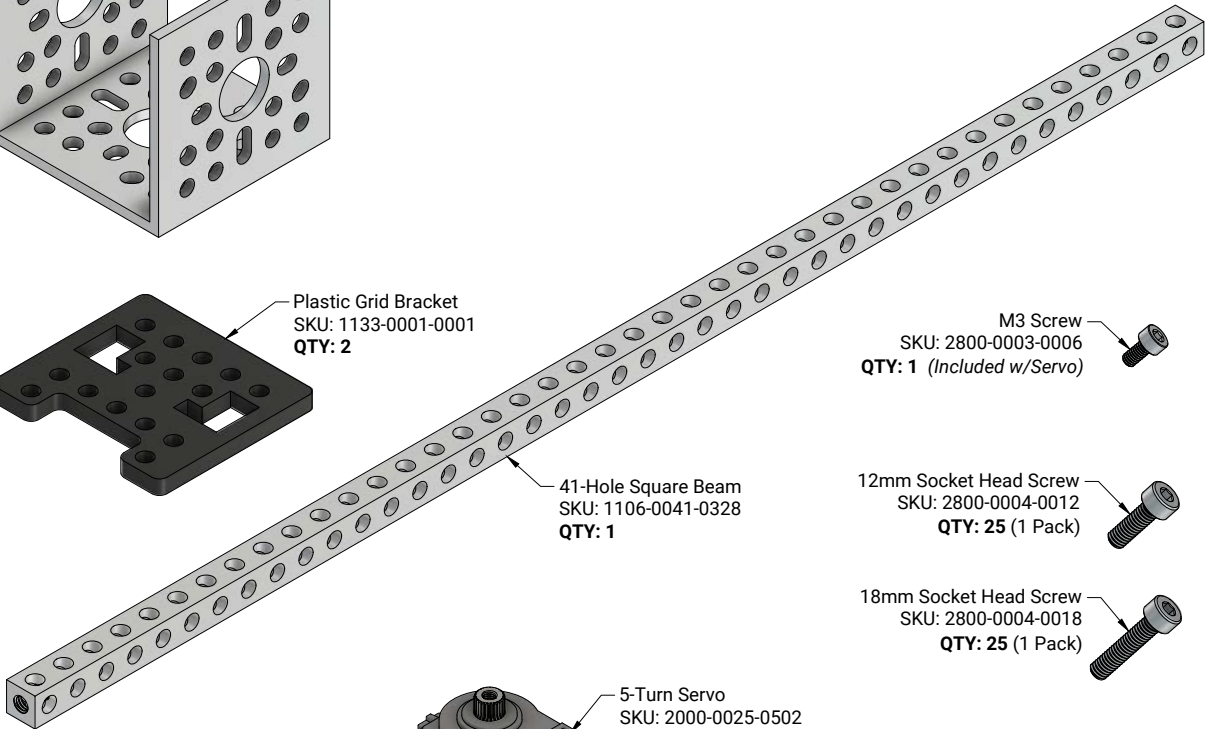
- 2.5mm Hex Key
- 3mm Hex Key
- 7mm Nut Driver



1-Hole U-Channel  
SKU: 1120-0001-0048  
QTY: 1



Plastic Grid Bracket  
SKU: 1133-0001-0001  
QTY: 2



41-Hole Square Beam  
SKU: 1106-0041-0328  
QTY: 1

M3 Screw  
SKU: 2800-0003-0006  
QTY: 1 (Included w/Servo)

12mm Socket Head Screw  
SKU: 2800-0004-0012  
QTY: 25 (1 Pack)

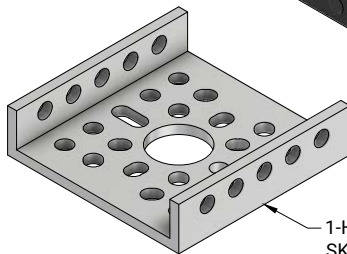
18mm Socket Head Screw  
SKU: 2800-0004-0018  
QTY: 25 (1 Pack)

131 Tooth Gear Rack  
SKU: 2311-0001-0131  
QTY: 1



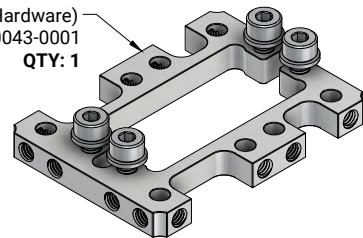
5-Turn Servo  
SKU: 2000-0025-0502  
QTY: 1

Locknut  
SKU: 2812-0004-0007  
QTY: 25 (1 Pack)



1-Hole Low-Side U-Channel  
SKU: 1121-0001-0048  
QTY: 1

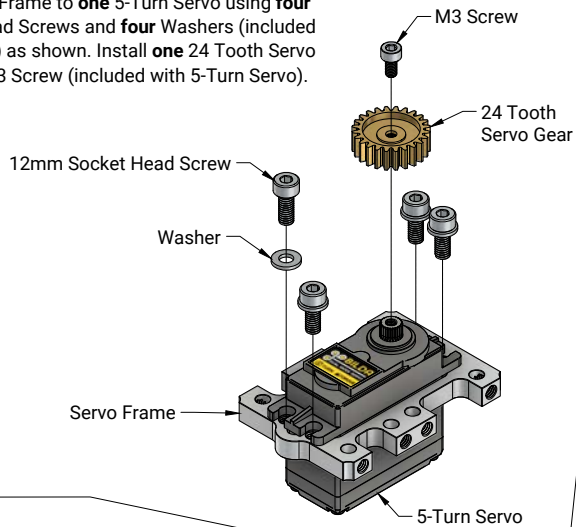
Servo Frame (w/ Hardware)  
SKU: 1802-0043-0001  
QTY: 1



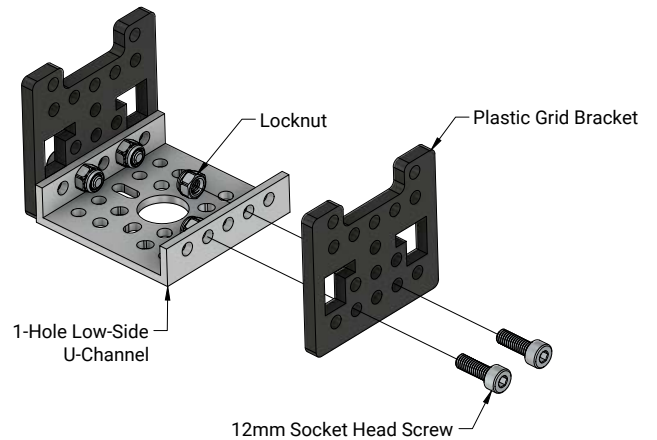
24 Tooth Servo Gear  
SKU: 2305-0025-0024  
QTY: 1

**STEP 1:**

Attach **one** Servo Frame to **one** 5-Turn Servo using **four** 12mm Socket Head Screws and **four** Washers (included with Servo Frame) as shown. Install **one** 24 Tooth Servo Gear using **one** M3 Screw (included with 5-Turn Servo).

**STEP 2:**

Using **four** 12mm Socket Head Screws and **four** Locknuts, attach **two** Plastic Grid Brackets to **one** 1-Hole Low-Side U-Channel as shown.

**STEP 3 — Gear Rack Subassembly**

Attach **one** 131 Tooth Gear Rack to **one** 41-Hole Square Beam using **one** 18mm Socket Head Screw and **one** Locknut as shown.

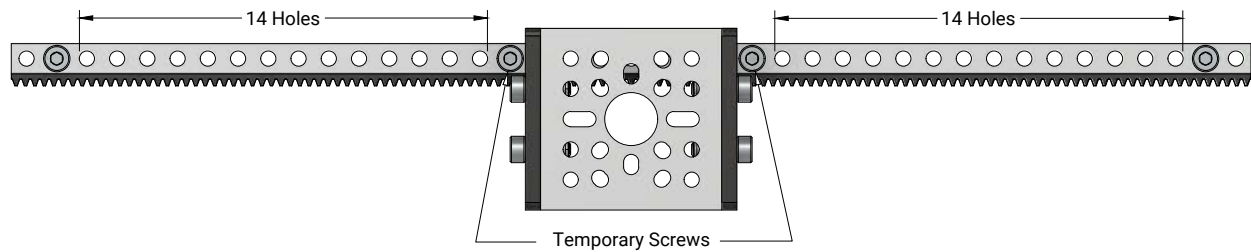
**STEP 4:**

Slide the Gear Rack Subassembly through the Plastic Grid Brackets as shown. Use **one** 18mm Socket Head Screw and **one** Locknut to fasten the opposite side of 131 Tooth Gear Rack to the 41-Hole Square Beam.



**STEP 5:**

Center the Gear Rack Subassembly so that two temporary screws can be inserted into the Square Beam as shown to keep it centered while completing **STEP 6**.



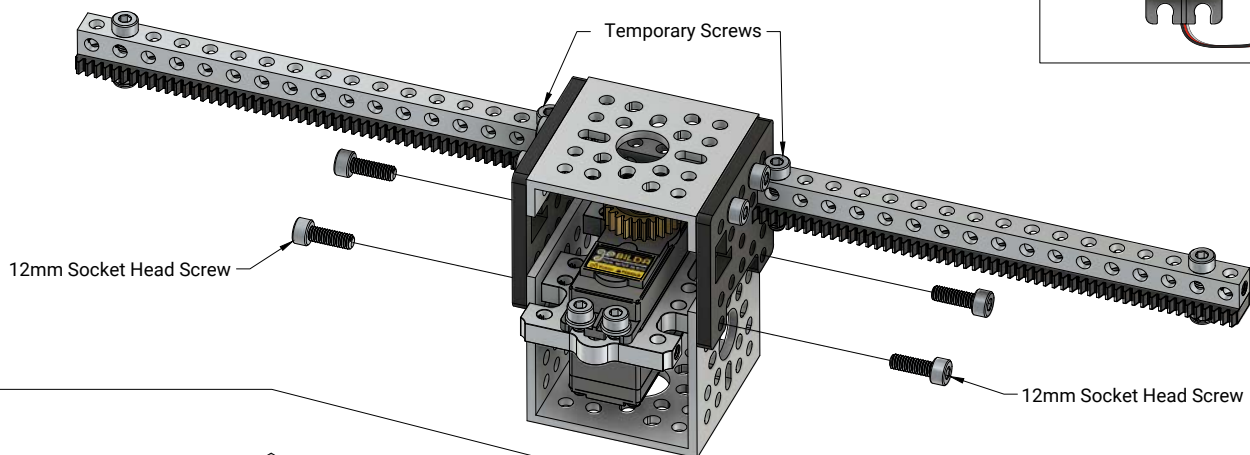
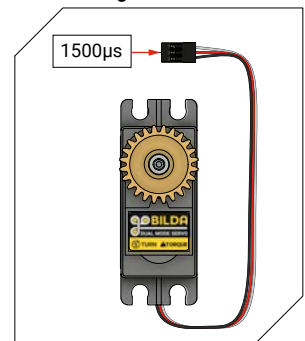
**STEP 6:**

Plug the servo into your servo controller and center the servo by sending a 1500 $\mu$ s PWM signal (**Figure 6-A**), then unplug the servo.

Attach the Servo Subassembly from **STEP 1** using **four** 12mm Socket Head Screws as shown.

Remove the Temporary Screws.

**Figure 6-A**



**Congratulations!**

You are now ready to plug your servo back in and test out your new Servo Gear Rack Kit!

